



Variations

Item	Dimensions	Colors
WPC Decking	2900mm x 140mm x 25mm	Teak, Carbon Black, Mahogany, Red Sandalwood

Accessories : End cap, Joist, Metal Clips, Start Clips, Stainless Screw

Trevo's WPC Decking

Trevo's WPC Decking is an exterior flooring material that perfectly mimics the appearance of wood without its hefty price. This composite material is made up of plastic, natural wood, and other fibers, which results in a compact and durable solution for commercial and residential applications.

Preliminary Considerations

Material

Due to batch-to-batch variations in surface texture and color brought by natural and processing factors, it is encouraged to buy all the WPC deck boards needed for a project at once.

The WPC deck boards will undergo an initial color stabilization in the first year in which they will naturally lighten by about 10% before stabilizing

Please note that WPC products are not suitable for use in enclosed and humid environments, such as bathroom, basement, sauna rooms etc. where the floor can be mildew.

Properly secure WPC wall panel components during transportation and loading to prevent movement during transit.

We recommend using our provided accessories and components to guarantee a secure fit and performance.

Transportation

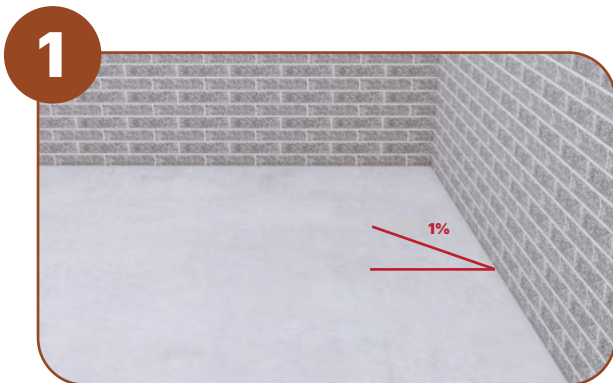
During transportation and loading of WPC deck boards, secure the components properly to prevent movement.

Storage

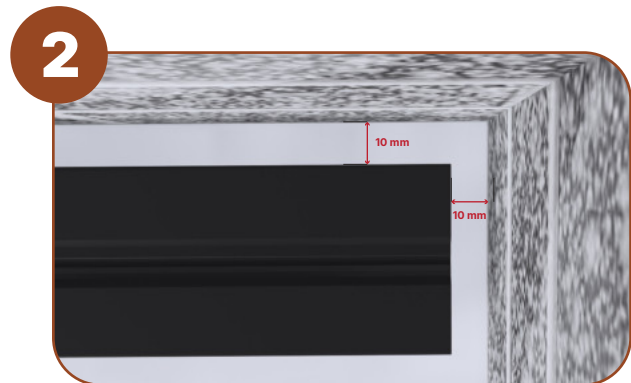
Place WPC deck boards on a flat, even surface during storage to prevent distortion or bending over time.

WPC deck boards exposed to direct sunlight can heat up and expand significantly prior to installation so covering or shading must be observed when storing.

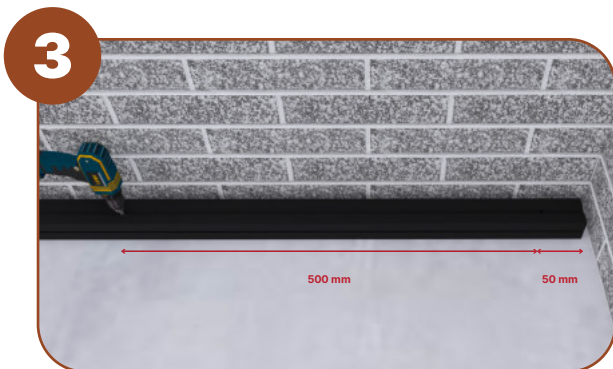
WPC Decking Installation



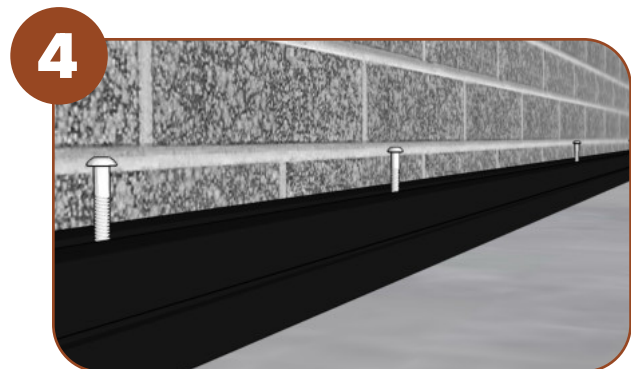
Ensure a solid, smooth, and slightly slope ground level before installation.



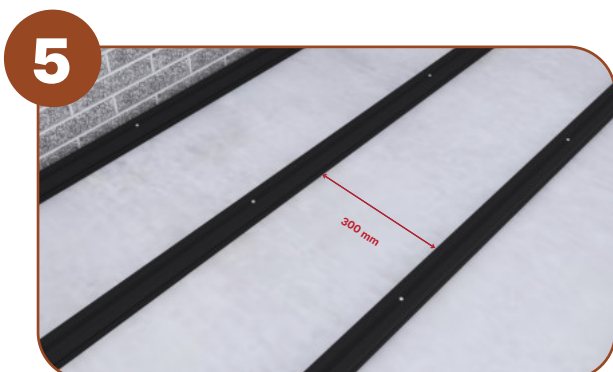
Provide a 10mm gap between the joists and any surrounding walls or obstacles.



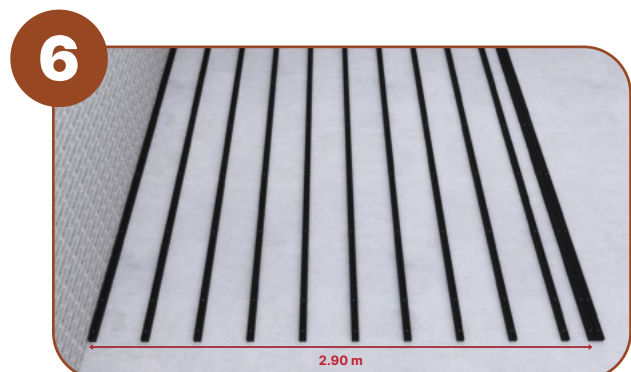
Pre-drill holes along the entire length of the joist at 500 mm intervals, leaving a 50mm gap from each end.



Attach expansion pipes to the ground then secure the expansion screws through both the holes in the joist and the ground.



Place each joist at 300 mm apart from their centerlines.



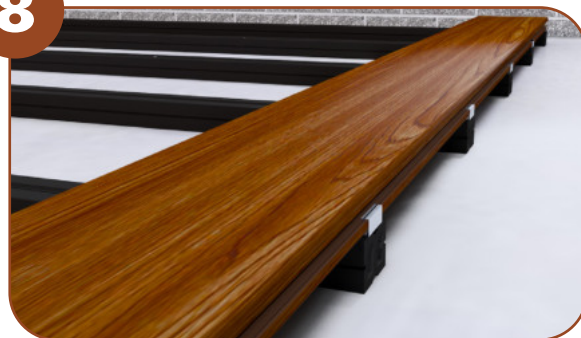
For decking system longer than 2.9m assemble a double joist with 4mm gap.

7



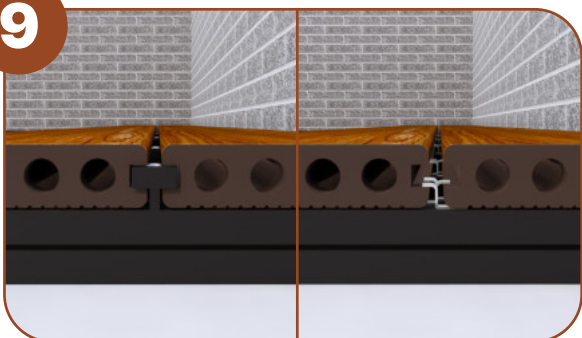
Drill holes at one corner of the joists, then secure the metal starting clips in place using screws.

8



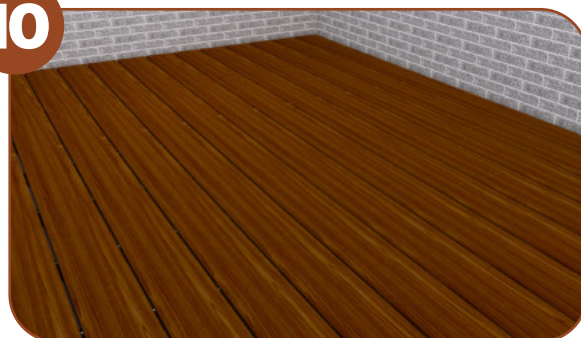
Install the first row of WPC deck boards perpendicular to the joists, fitting them into the metal start clips.

9



Use either plastic or metal intermediate clips to secure the opposite side of the WPC deck board width, connecting it to the next adjacent board.

10



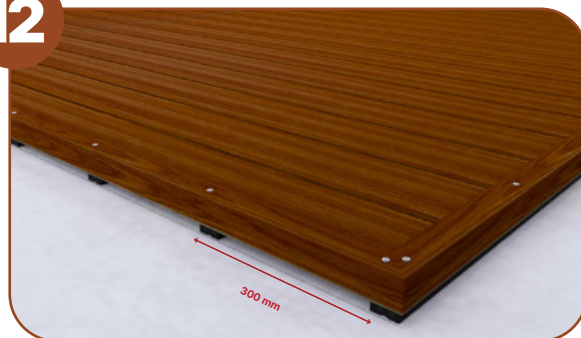
Provide a 10mm gap between the joists and any surrounding walls or obstacles.

11



Fasten the last WPC deck board by pre-drilling a hole on its exposed side, passing through both the board and the joist, and then secure it with screws.

12



Achieve a refined edge around the deck perimeter by attaching end cap, securing it with screws spaced at 300 mm intervals.

Maintenance and Care

Maintenance

Ensure proper drainage to prevent water from pooling on the deck surface. Clear any debris from gutters and downspouts to avoid water buildup.

Refrain from dragging heavy furniture across the decking. Use caution to prevent potential damage.

Consider using deck protectors or mats under heavy furniture and high-traffic areas to reduce wear and tear.

Maintenance and Care

Maintenance

Avoid open flames, bonfires, or barbecue grills on or near the deck that may damage the surface.

Cleaning

Dust and Debris. Use a leaf blower or hose to remove surface debris. Clean grooves with warm, soapy water and a bristled brush.

Tannins. Wood tannins may surface in new decking, especially under sunlight, but will fade over time. Keeping gaps clean reduces buildup.

Water Stains. Water pooling can cause stains, affected by deck cleanliness and drying time. Clean with warm, soapy water or use a jet wash.

Mold and Mildew. Ensure proper drainage and airflow by trimming nearby vegetation to prevent mold growth. Clean with warm, soapy water and a brush.

Oil and Grease. Clean spills immediately by blotting excess and using an all-purpose cleaner. Avoid bleach-based cleaners.

Colored Stains. Scrub with warm, soapy water and, if necessary, apply an all-purpose cleaner.

Technical Data

Component	Percentage
HDPE + Additives	55%
Timbre Wood Fibers	45%

Characteristics

Physical Data	Requirements	Test Result
Hardness	>58HRR	61HRR
Moisture Content	<2%	0.30%
Modulus of Rupture	>20 Mpa	40Mpa
Modulus of Elasticity	>1800 Mpa	3818Mpa
Thickness of Swelling	>1%	0.40%
Size Change – Calefaction	2.50%	-0.10%
Resistance to Wear	<0.08g/100r	0.077g/100r
Size Change H/L Temp	0.20%	-0.10%
Screw Holding Capability	>1000N	3120N
Artificial Aging Resistance	<2.0 chromatic aberration	0.89 chromatic aberration

Slip Potential

Slip Potential (Dry)	Low
Slip Potential (Wet)	Low