

Variations

Item	Dimensions	Colors
Seamless	2900mm x 250mm x 8mm	White Oak, Wenge, Walnut, Narra, Oak, Light Cedar
V-Groove		
DU-Groove		
TU-Groove	2900mm x 240mm x 8mm	

Accessories : Exterior corner, interior corner, J-channel, H-trim, Metal clips

About Decolite's PVC Ceilings

Decolite's PVC Ceiling Panels are a stylish and practical alternative to traditional ceiling materials, offering durability, modern aesthetics, and easy installation. They elevate interior spaces by providing a clean, seamless look that enhances comfort, visual appeal, and overall ambiance in any room.

Preliminary Considerations

Material

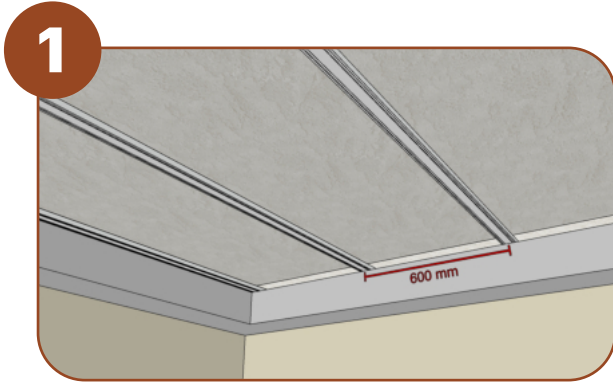
For color and surface texture uniformity, it is recommended to purchase all required PVC ceiling panels for a project in a single transaction.

Storage

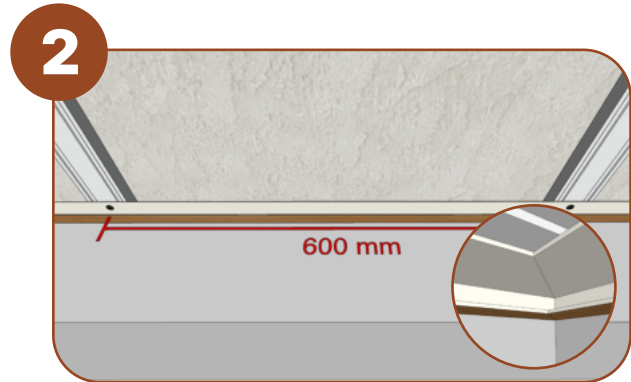
Secure PVC ceiling panel components using a sturdy material during transportation to limit movement during transit.

Do not drag the panels to prevent unnecessary scratches: instead, lift and carry them.

PVC Ceiling Installation



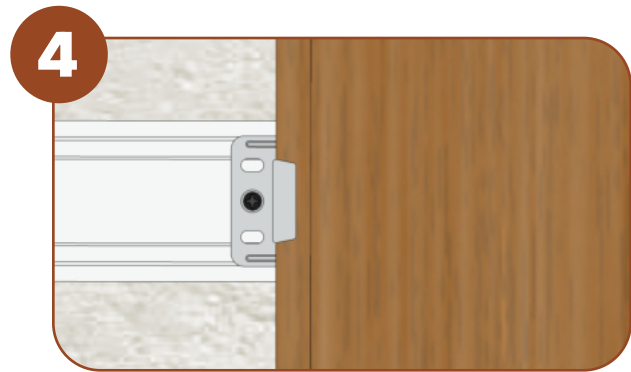
Ensure the ceiling backing is flat, solid, and dry; then, install battens at 600mm intervals where necessary.



Line J-channels along the ceiling perimeter then use screws to secure at 600mm intervals. Trim the ends of the two J- channels at corners where they meet.



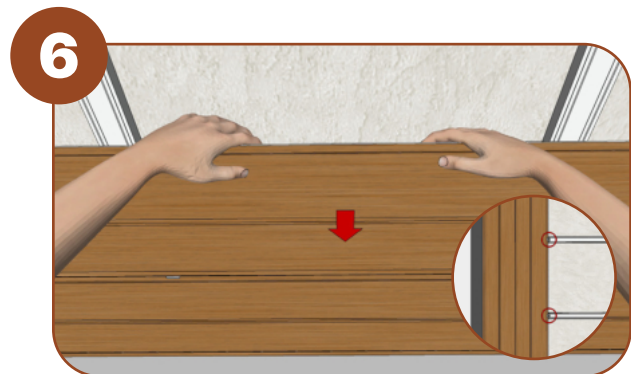
Begin at one end of the ceiling, perpendicular to the battens, and insert the tongue of the PVC ceiling panel into the J- channel.



Secure metal clips on every inner batten along the exposed groove of the PVC ceiling panel. Avoid direct screwing to prevent initial cracks on the panels.



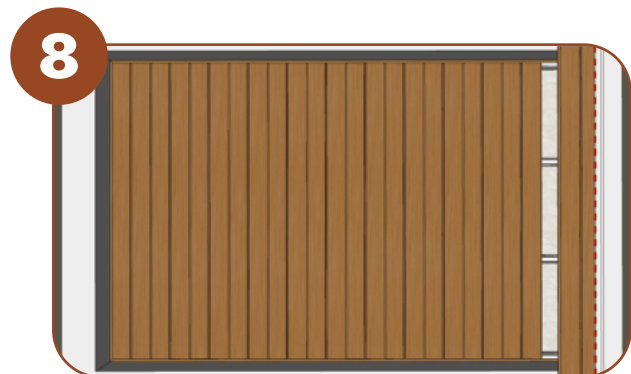
Overlay the succeeding PVC ceiling panel with its tongue into the groove of the first panel to conceal the fasteners.



Gently tap the panel with your hand until it fits snugly, then secure it with metal clips on the exposed groove.



Use H-trim in corners where there is a need to alter the orientation of the PVC ceiling panels and/or to connect two lengths of the panels.



Upon reaching the last PVC ceiling panel, cut it to a width that fits into the J-channel at the end of the ceiling.

Maintenance and Care

Maintenance

Use curtains or blinds during prolonged exposure to intense sunlight to minimize the effect of color fading over time.

Cleaning

Regularly dust and wipe the PVC ceiling panels with a soft cloth to maintain its appearance.

Refrain from using abrasive materials or harsh chemicals to prevent scratching or damage to the surface.

Technical Data

Component	Percentage
PVC	40%
CaCO ₃	31%
Stabilizers	14%
Other Additives	15%

Characteristics

Material Characteristic	Requirements	Test Result
Melting point (°C)		110
Impact resistance	EN 13245-2:2008/AC:2009	0.30%
Fire test class	BS 476:PART 7:1987	Class 1